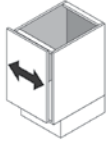


Cabinet Construction : Precision Alignment

SOFT CLOSE HINGE

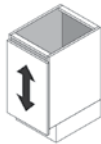
Side Adjustment

Rotate front screw to increase or decrease door overlay ($\pm 2\text{mm}$)



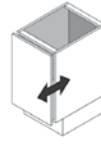
Height Adjustment

Rotate cam screw on the mounting plate to adjust door position ($\pm 2\text{mm}$).



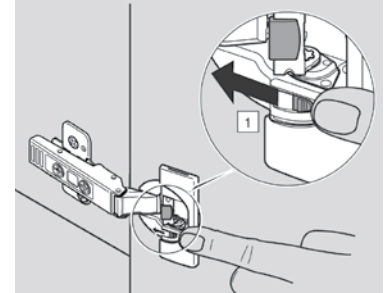
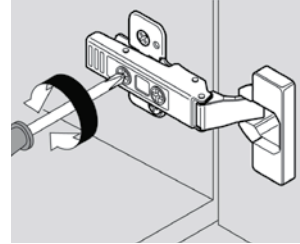
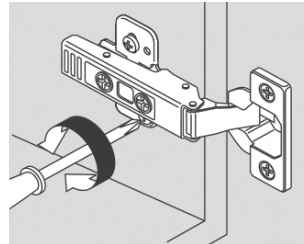
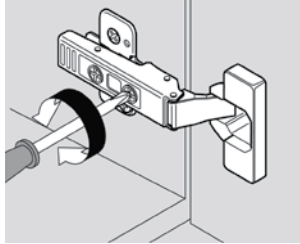
Depth Adjustment

Rotate rear spiral tech cam screw to adjust door gap ($+3\text{mm}$, -2mm)

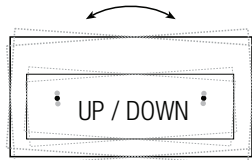
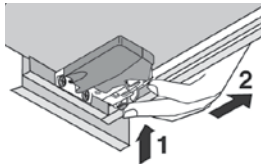


Soft Close Deactivation

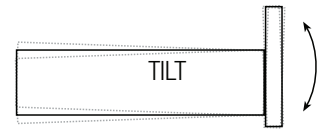
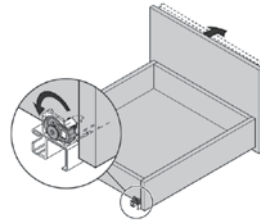
For small or light doors, the Soft Close can be deactivated on one of the hinges. Move switch on hinge cup. Close door once to complete deactivation. To reactivate, move switch back to original position.



WOOD DOVETAIL DRAWER with SOFT CLOSE



Adjust by sliding grey tab forward or backward.
Drawer ships in lowest position.
Slide tab backward to raise drawer.



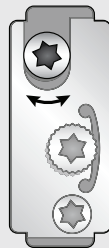
Adjust by twisting the tab at the rear of the glide.

METAL DRAWER with SOFT CLOSE

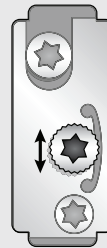
TILT ADJUSTMENT



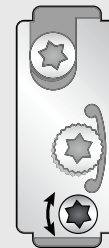
FRONT REMOVAL



HEIGHT ADJUSTMENT



SIDE ADJUSTMENT



EUROSTYLE DOOR SYSTEMS

Call customer service for instructions for precise alignment of EuroStyle door systems.

